

NAPOLEON

DON'T BE A HERO.
BE A LEGEND.



LEGEND SERIES
napoleongrills.com



THE LEGEND SERIES



JETFIRE™ IGNITION IS LIKE BRINGING A FLAMETHROWER TO A LIGHTER FIGHT.

You view perfect grill marks as a badge of honor.

You think cutting into a steak to check doneness is sacrilege.

You know when and why to use rub vs. marinade vs. sauce.

That's why you are ready for a Napoleon grill. Napoleon takes the art of grilling to a higher level.

Every feature, every material is engineered to give ultimate performance — so you can create unforgettable meals.

And just like you, we're not some rookie behind the grill. Napoleon is a family-owned company with over 20 passionate years of grill-making experience.

Every great meal starts with the best ingredients. Start yours with the best grill out there: Napoleon.

EXCLUSIVE FEATURES



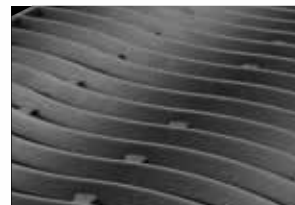
Ceramic Infrared Rear Burner (LD485RSIB)



Infrared **SIZZLE ZONE™** Side Burner (LD485RSIB)



Range Side Burner (excl. LD485RSIB)



Porcelainized Cast Iron **WAVE™** Cooking Grids



Stainless Steel Sear Plates



JETFIRE™ Ignition



ACCU-PROBE™ Temperature Gauge



Ergonomic Control Knobs



Folding Side Shelves (410 and 325 models)



Stainless Steel Side Shelves with Integrated Tool Hooks and Condiment Holders (LD325SB, LD410SB do not feature condiment holders)

LD485RSIB

74,000 BTU's
6 burners
Cooking Area: 815 in²



LD485SB

59,000 BTU's
5 burners
Cooking Area: 670 in²



LD485 with rear infrared burner and infrared **SIZZLE ZONE** side burner

- Double walled **LIFT EASE** stainless steel lid
- Ceramic infrared rear burner
- Infrared **SIZZLE ZONE** side burner
- Porcelainized cast iron **WAVE** cooking grids
- Stainless steel tube burners with crossover lighting for quick ignition
- Ergonomic control knobs with soft touch grip surface
- Stainless steel side shelves with integrated tool hooks and condiment holders
- Robust door handles double as towel holders
- EASY ROLL locking casters
- Superior enclosed cart design
- Available as a natural gas or propane unit
- Ten Year Limited Warranty



LD485 with range side burner

- Double walled **LIFT EASE** lid in porcelain black and matching doors
- Range side burner
- Porcelainized cast iron **WAVE** cooking grids
- Stainless steel tube burners with crossover lighting for quick ignition
- Ergonomic control knobs with soft touch grip surface
- Stainless steel side shelves with integrated tool hooks and condiment holders
- Robust door handles double as towel holders
- EASY ROLL locking casters
- Superior enclosed cart design
- Available in propane
- Ten Year Limited Warranty



CERAMIC INFRARED REAR BURNER

Ceramic rear rotisserie burner radiant heat seals and locks in the juices quickly for superior tenderness. Restaurant style results and perfect self-basting roasts every time. (Heavy duty rotisserie kit with counter balance, stainless steel rotisserie bracket and forks available for most models).



LD410SB

48,500 BTU's
4 burners
Cooking Area: 550 in²



LD410 with range side burner

- Double walled stainless steel lid
- Range side burner
- Porcelainized cast iron **WAVE**™ cooking grids
- Stainless steel tube burners with crossover lighting for quick ignition
- Ergonomic control knobs with soft touch grip surface
- Folding stainless steel side shelves with integrated tool hooks
- Sleek design featuring flush double doors with seamless handles
- EASY ROLL locking casters
- Superior enclosed cart design
- Available in propane
- Ten Year Limited Warranty



LD325SB

36,000 BTU's
3 burners
Cooking Area: 435 in²



LD325 with range side burner

- Double walled stainless steel lid
- Range side burner
- Porcelainized cast iron **WAVE**™ cooking grids
- Stainless steel tube burners with crossover lighting for quick ignition
- Ergonomic control knobs with soft touch grip surface
- Folding stainless steel side shelves with integrated tool hooks
- Sleek design featuring single panel door and stainless steel handle
- EASY ROLL locking casters and pedestal base
- Superior enclosed cart design
- Available in propane
- Ten Year Limited Warranty



2 GRILLS IN 1

Try the Napoleon exclusive cast iron charcoal tray and turn your Napoleon gas grill into a charcoal grill.



INSTANT JETFIRE™ IGNITION

Napoleon's **JETFIRE**™ ignition starts each burner individually for reliable start ups - EVERY time.



ANATOMY OF A LEGEND



Model shown: LD485RSIB

INFRARED SIZZLE ZONE™ TECHNOLOGY

Napoleon's infrared grilling technology makes serving the perfect meal quick and easy each and every time. The SIZZLE ZONE™ heats up to 1800° for quick searing to lock in moisture and flavor for the perfect steak.



SPECIFICATIONS	LD485RSIB	LD485SB	LD410SB	LD325SB
LIFT EASE™ roll top lid	S	S	-	-
ACCU-PROBE™ temperature gauge	S	S	S	S
JETFIRE™ ignition	S	S	S	S
Rear burner igniter	S	-	-	-
Stainless steel bottom burners with crossover lighting	4	4	3	2
Ceramic infrared rear rotisserie burner	S	-	-	-
Range side burner	-	S	S	S
Infrared SIZZLE ZONE™ side burner	S	-	-	-
Porcelainized cast iron WAVE™ cooking grids	S	S	S	S
Ergonomic control knobs	S	S	S	S
Spider guard venturi and brass valves	S	S	S	S
Removable drip pan	S	S	S	S
Warming rack	S	S	S	S
Side Shelves with Integrated Condiment Trays and Tool Hooks	S	S	-	-
Side Shelves with Integrated Tool Hooks	S	S	S	S
10 Year Limited Warranty	S	S	S	S
ACCESSORIES	LD485RSIB	LD485SB	LD410SB	LD325SB
Rotisserie kit with motor	0	0	0	0
Charcoal tray	0	0	0	0
Smoker pipe	0	0	0	0
Heavy duty cover	0	0	0	0
GRILL INPUTS (BTU's)	LD485RSIB	LD485SB	LD410SB	LD325SB
Main tube burners	48,000	48,000	37,500	25,000
Side burner	12,500	11,000	11,000	11,000
Rear infrared burner	13,500	-	-	-
Total	74,000	59,000	48,500	36,000
DIMENSIONS	LD485RSIB	LD485SB	LD410SB	LD325SB
Total width in inches - shelves up / shelves down	63 ¼	63 ¼	50 ¼ / 34 ¼	45 ¼ / 29 ¼
Total depth in inches	27 ¼	24 ¼	22 ¼	22 ¼
Total height in inches - lid open / lid closed	59 / 49	59 / 49	60 / 45 ¼	60 / 45 ¼

S = Standard O = Optional

ACCU-PROBE™ TEMPERATURE GAUGE

Safely and instantly read the internal temperature of your grill with the lid closed. This thermometer has a wide temperature measurement range from 0° to 370°C (0° to 700°F) and includes the ideal smoking and searing range.





NAPOLEON - CELEBRATING OVER 40 YEARS OF HOME COMFORT PRODUCTS



214 Bayview Drive, Barrie, Ontario, Canada L4N 4Y8
103 Miller Drive, Crittenden, Kentucky, USA 41030
7200 Trans Canada Highway, Montreal, Quebec H4T 1A3

PHONE: 866-820-8686
napoleongrills.com
info@napoleonproducts.com

Approved by Intertek Testing Services to standards in the USA and Canada: ANSI Z21.58 / CSA 1.6 - Outdoor Cooking Gas Appliances. All specifications and designs are subject to change without prior notice due to ongoing product improvements. Consult your owner's manual for complete installation and operating instructions and check all local and national Building Codes and Regulations. Not all features available on all models. Napoleon is a registered trademark of Wolf Steel Ltd. Images and colors may not be exactly as shown.

Authorized Dealer



Printed in Canada
ADBRLGND 07/2017