

URBAN  
*Bonfire*<sup>®</sup>

URBAIN

Your Kitchen Outdoors



Design Guide US

Summer 2021



# Table of Contents

- INTRODUCTION 5
- Welcome to Urban Bonfire 5
  - NACRAE™ Finish 6
  - Materials 7
  - The Urban Bonfire Framework 12
  - Ergonomy & Applications 14
- URBAN BONFIRE'S CLASSICS 21
- Finishes 22
  - Classics Series 23
  - Powder Coated Accessories 32
  - Price List 34
  - Combining Classics 37
- URBAN BONFIRE'S CUSTOM OFFERING 44
- Our Custom Design Process 44
  - Powder Coating Options 48
  - Handle Options 49
  - Modules 51
  - Planters 73
- RESOURCES 85
- Classics Order Sheet 87
  - Request for Design 93
  - Compatibility (Custom) 94
  - Compatibility (Classics) 95
  - Cabinet Specifications 96
  - Inspiring Designs 98



**Contact**

[www.urbanbonfire.com](http://www.urbanbonfire.com)  
[info@urbanbonfire.com](mailto:info@urbanbonfire.com)  
 1 (866) 898-5354

**Photography Credits**  
 Location: Newport Beach, California  
 Dealer Partner: Pirch  
 Design: Anne Michaelsen Yahn  
 Photography: Hugo Landa Garcia  
 Project details: Powder coating in Onyx, stainless steel handles, Alfresco appliances.



## INTRODUCTION

### Welcome to Urban Bonfire

Urban Bonfire designs and manufactures functional, beautiful and high-performance outdoor kitchen and entertainment solutions for clients around the world. With a fully integrated in-house design team, efficient manufacturing and compatibility with most major outdoor appliances and countertop surfaces, Urban Bonfire is the market leader in outdoor space activation centered around family, friends, food and lasting memories.

Each Urban Bonfire outdoor kitchen system features a wide array of functional, aesthetic and finishing options to choose from. Every custom layout and design is configured to maximize outdoor cooking and entertainment space while offering versatility, integrated storage and a carefully curated series of colors, handles and finishing choices.

#### Photography Credits

Location: Whistler, British Columbia

Dealer Partner: Kerrisdale Lumber

Design: Sherwood Outdoor Kitchens

Photography: Sherwood Outdoor Kitchens

Project details: Powder coating in Onyx, stainless steel handles, Aspire by Hestan appliances.

# NACRAĒ™ Finish

Urban Bonfire's NACRAĒ™ finish was inspired by the beauty, strength and resilience of mother-of-pearl. Each finish is crafted with a micro textured formulation that preserves and protects beauty, creating a stable depth of color in all climates and any outdoor environment.

Now with revolutionary, all natural, **anti-microbial** protection.



# Materials

## Marine Grade Aluminum

Non-combustible, thick gauge marine grade aluminum construction for all Urban Bonfire cabinets, planters, accessories and backsplash systems.

Urban Bonfire's marine grade aluminum is twice as thick as most stainless steel cabinetry on the market, yet lighter in weight. Aluminum is easy to transport and cooperates well during installations. It is the ideal material for extreme climates (snow, ice, salt water, humidity) and long-term quality.

## 304 Stainless Steel Hardware

We use outdoor grade 304 stainless steel for our door slides, hinges, pulls and leveling legs.



## NACRAĒ™ is engineered for life outdoors.

Standard feature on all Urban Bonfire products



Durable, 4-season formulation that resists scratches, fading and stains even in harsh climates.



FDA approved and environmentally sustainable material and process.



Integrated all-natural anti-microbial properties for maximum safety and freshness.



A collection of specialty colors developed in collaboration with iconic designers.

# Get Inspired



## Anthracite

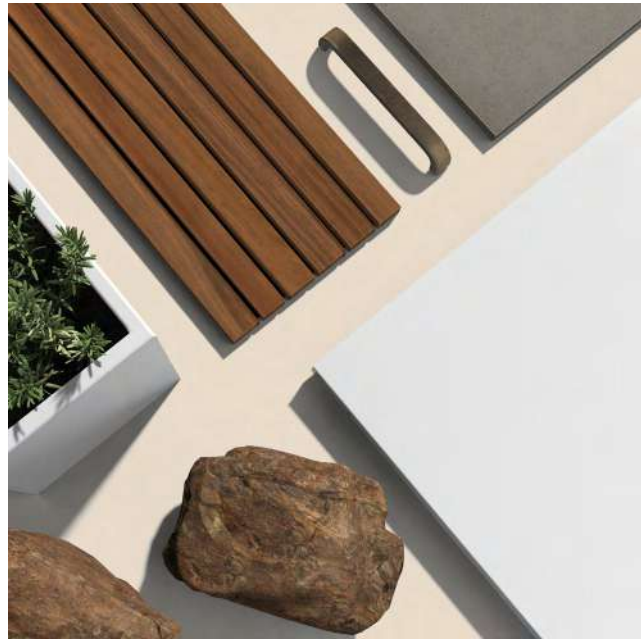
Modern dark gray with slate undertones. Elevates contemporary and outdoor urban environments.



## Artesan

Dark gray finish with a warm bronze undertone. Designed to accent wood and natural limestone while still creating a welcome contrast through its depth of tone.





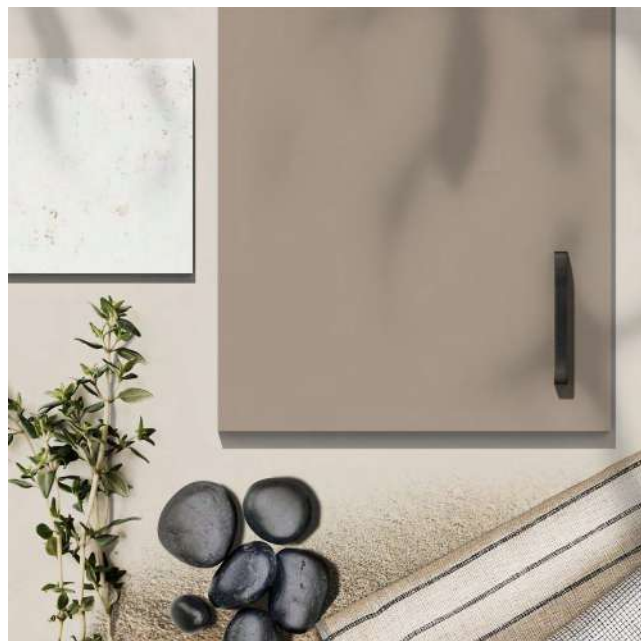
### Chantilly

This crisp white works in almost any outdoor setting. Reflecting tones of silk and clean linen.



### Pewter

Warm dark gray with bronze undertones. Adds a refined touch to any outdoor environment.



### Clay

An elegant and versatile rich beige. Enhances the mood and atmosphere of any classic outdoor living space.



### Onyx

Deep, dark black that is sure to create a standout piece in any environment.



# The Urban Bonfire Framework

**Universal Track System**

- Numerous interior accessory options to allow for easy customization
- Maximized efficiency, functionality and usage of every cabinet

**Integrated Backsplash System**

- Extruded aluminum with electrostatic powder coating
- Matching Clip-in Planters and accessories available

**Planter Boxes**

- Fully welded, powder coated marine grade aluminum
- Curated series with custom shapes, height and sizes available

**Construction**

- Non-combustible thick gauge marine grade aluminum
- Outdoor grade 304 stainless steel hardware

**NACRAE™ Finish**

- Super durable NACRAE™ powder coating finish included on all cabinets, planters and accessories

**Handles**

Carefully curated designer-inspired color options and "living finish" bronze handle upgrades available in various shapes and tones

**Compatibility**

- Custom trim kits for compatibility with major outdoor appliances brands and models
- Ready to receive Dekton® and other outdoor-rated countertop materials

**A Solid Foundation**

- Commercial grade stainless steel leveling legs
- Self-leveling toe kick that adapts to slope and outdoor site conditions

# Ergonomy & Applications

Explore some of our most popular kitchen applications.



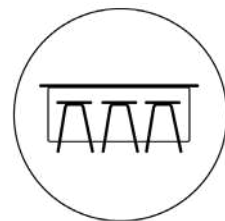
## Cooking

Efficiency is key when designing the perfect cooking space. Each Cooking layout includes ample storage space, adjustable shelves, pull-out drawers and refuse bins to elevate your outdoor cooking experience.



## Bar

The perfect Bar should keep all of your essentials within easy reach. Convenient, easy access storage for glasses and drinkware creates a casual area for guests to gather. Add in some refrigeration and you have the perfect mix!



## Island

Create unforgettable moments with family and friends around an outdoor Island. Versatile storage, lots of counterspace and overhanging countertops for seating make a perfect place for an impromptu alfresco dinner.



## Storage

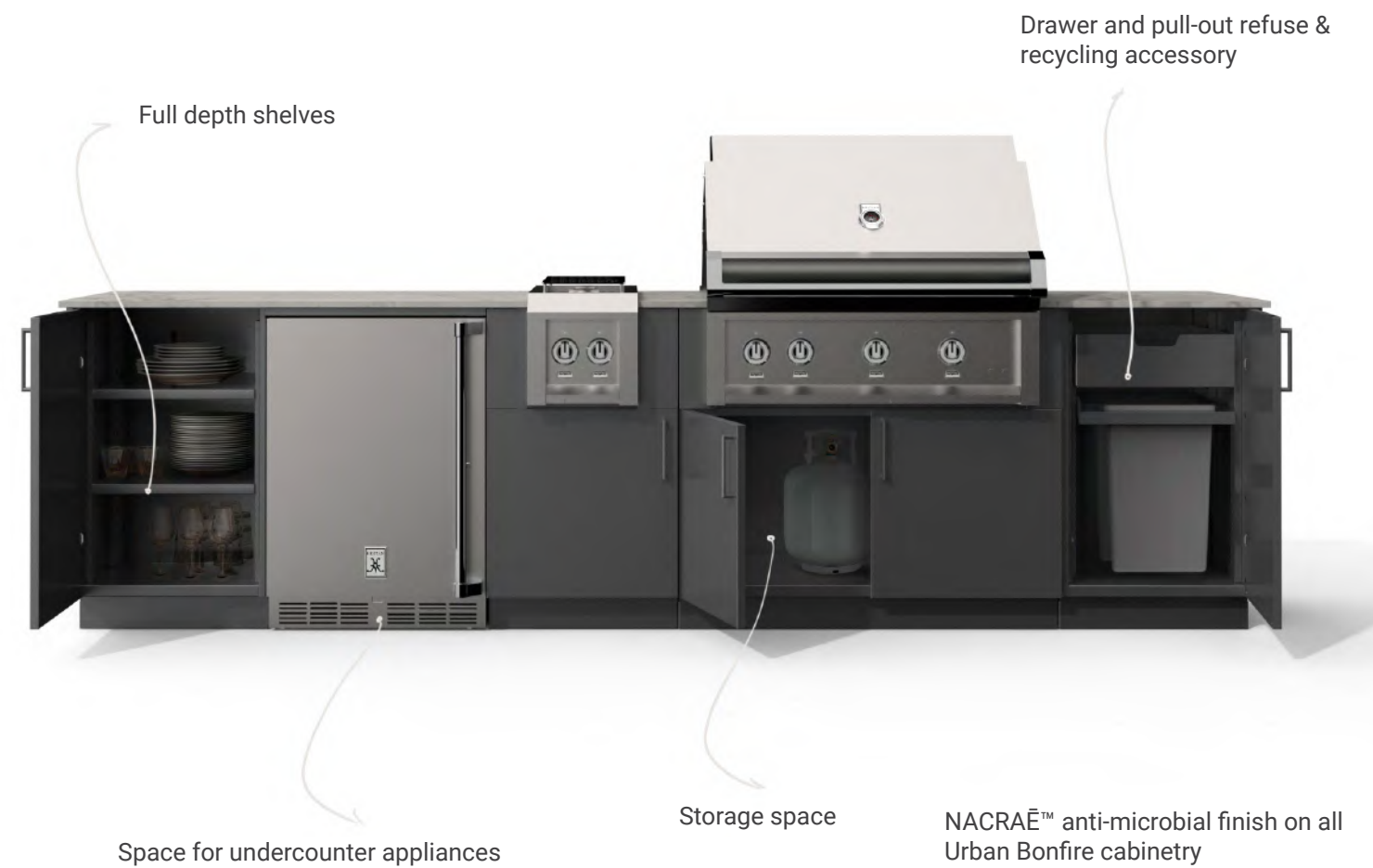
The Storage application of our modular system is designed to be both practical and efficient. Allowing you to effectively store seasonal or everyday items such as pots, gardening materials, outdoor cushions, towels and more, while leaving the counter clear for gardening or entertaining.



# Cooking

Efficiency is key when designing the perfect cooking space. Each Cooking layout includes ample storage space, adjustable shelves, pull-out drawers and refuse bins to elevate your outdoor cooking experience.

Shown here with our SPRING 36 Outdoor Kitchen and DEKTON® countertop in Portum.



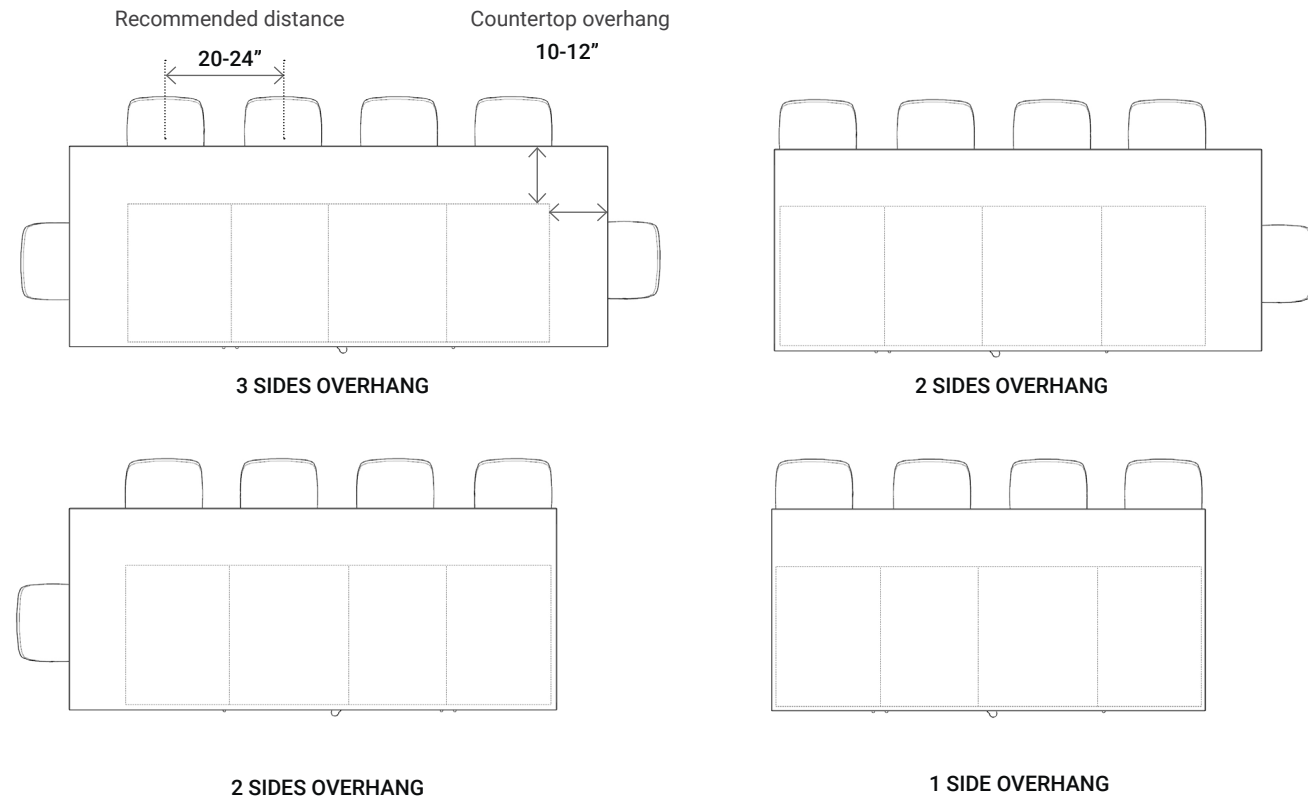




## Island

Create unforgettable moments with family and friends around an outdoor Island. Versatile storage, lots of counterspace and overhanging countertops for seating make a perfect place for an impromptu alfresco dinner.

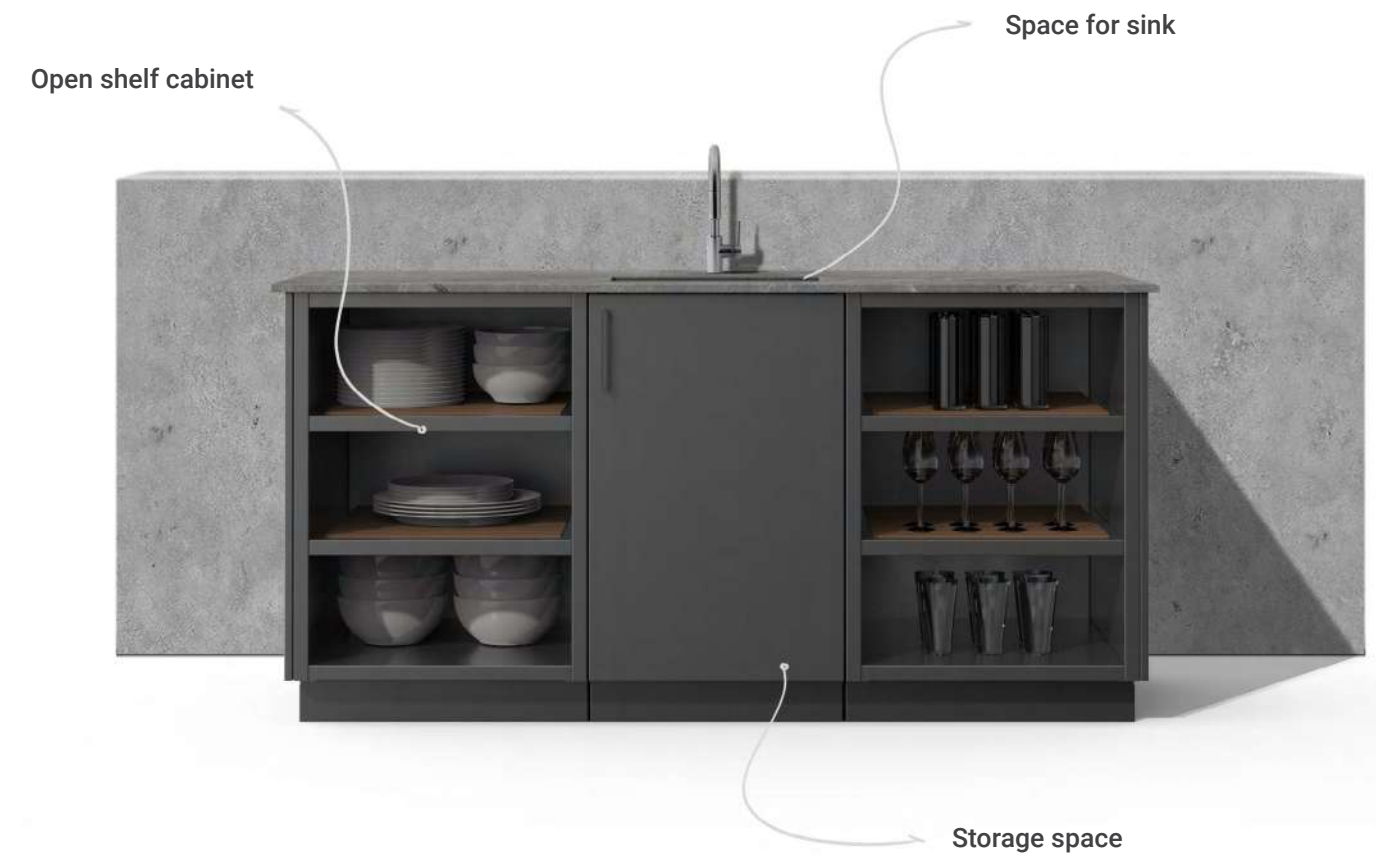
Shown here with our VERMONT Outdoor Kitchen and DEKTON® countertop in Nilium.



## Bar

The perfect Bar should keep all of your essentials within easy reach. Convenient, easy access storage for glasses and drinkware creates a casual area for guests to gather. Add in some refrigeration and you have the perfect mix!

Shown here with our FIJI Outdoor Kitchen and DEKTON® countertop in Vera.





## Storage

The Storage application of our modular system is designed to be both practical and efficient. Allowing you to effectively store seasonal or everyday items such as pots, gardening materials, outdoor cushions, towels and more, while leaving the counter clear for gardening or entertaining.

Shown here with our EQUINOX Outdoor Kitchen and DEKTON® countertop in Opera.



Full depth shelves

Useful counter space for potting and other gardening tasks



Heavy duty retractable drawers

You can personalize your Urban Bonfire outdoor kitchen with our

## NEW Customizer Online Tool

at [urbanbonfire.com](http://urbanbonfire.com)

**Step 1: Choose your Powder Coating Finish**

Our custom formulated "Super Durable" finishes are applied to AAMA 2604 standards. A slight textured finish adds depth to the color and resists fingerprints.

Anthracite Clay Pewter

**Step 2: Choose your Handles**

Each kitchen is shipped with a set of stainless steel handles and matching powder coated handles. Choose which handle style you will install on your kitchen.

Stainless Steel Powder Coated Stainless Steel

**Choose your Accessory for Cabinet #1**

1 Pull-Out Drawer 2 Pull-Out Drawers 3 Pull-Out Drawers Refuse Accessory

Drawer and Refuse Accessory Bundle 1 Full Depth Shelf 2 Full Depth Shelves No Accessory

URBAN BONFIRE'S CLASSICS

## Our Most Popular Layouts

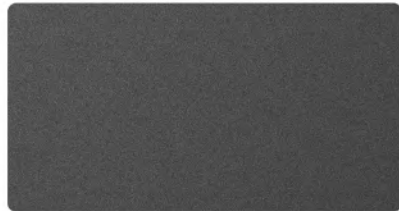
Urban Bonfire's Classics program offers a series of our most popular outdoor kitchen configurations, colors and accessories. Every "Classics" outdoor kitchen includes a professional DEKTON® Countertop template and is compatible with most industry leading outdoor grill and appliance brands.



# Classics Finishes

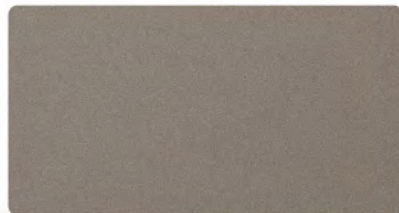
## Powder Coated Colors

Our custom formulated "Super Durable" finishes add depth to the colors and resistance to fingerprints.



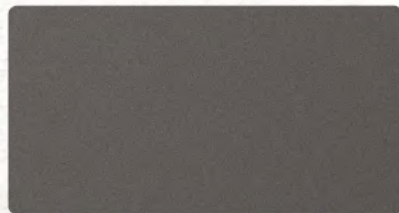
### Anthracite

Modern dark gray with slate undertones. Elevates contemporary and outdoor urban environments.



### Clay

An elegant and versatile rich beige. Enhances the mood and atmosphere of any classic outdoor living space.



### Pewter

Warm dark gray with bronze undertones. Adds a refined touch to any outdoor environment.

## Powder Coated Handles

Each "Classics" kitchen includes both our basic and fully powder coated, matching, outdoor grade 304 stainless steel handles.



POWDER COATING COLORS DIGITALLY RENDERED.  
ACTUAL PRODUCTS MAY VARY.

# Sierra Series



S-SIERRA36



\*Length 87"  
Depth 28 3/4"  
Height 36 1/2" (± 1")

Presented in Clay with DEKTON® Edora (2cm) and Alfresco appliance.\*\*



S-SIERRA42



\*Length 93"  
Depth 28 3/4"  
Height 36 1/2" (± 1")

Shown in Pewter with DEKTON® Fossil (2cm) and Aspire by Hestan appliance.\*\*

\* Including 3/4" countertop nosing.  
\*\* Countertop and appliances are sold separately.

## Boreal Series



### S-BOREAL36



\*Length 108"  
Depth 28 3/4"  
Height 36 1/2" (± 1")

Presented in Pewter with DEKTON® Vera (2cm) and Blaze appliances.\*\*



### S-BOREAL36M



\*Length 108"  
Depth 28 3/4"  
Height 36 1/2" (± 1")

Presented in Anthracite with DEKTON® Nilium (2cm) and Wolf appliance.\*\*



### S-BOREAL42



\*Length 114"  
Depth 28 3/4"  
Height 36 1/2" (± 1")

Presented in Clay with DEKTON® Opera (2cm) and Coyote appliance.\*\*



### S-BOREAL42M



\*Length 114"  
Depth 28 3/4"  
Height 36 1/2" (± 1")

Presented in Pewter with DEKTON® Nilium (2cm) and Alfresco appliance.\*\*

\* Including 3/4" countertop nosing.  
\*\* Countertop and appliances are sold separately.

## Horizon Series



### S-HORIZON36



\*Length 111"  
Depth 28 3/4"  
Height 36 1/2" (± 1")

Presented in Anthracite with DEKTON® Nilium (2cm) and Blaze appliances.\*\*



### S-HORIZON36M



\*Length 111"  
Depth 28 3/4"  
Height 36 1/2" (± 1")

Presented in Clay with DEKTON® Opera (2cm) and Coyote appliances.\*\*



### S-HORIZON42



\*Length 117"  
Depth 28 3/4"  
Height 36 1/2" (± 1")

Presented in Pewter with DEKTON® Edora (2cm) and DCS appliances.\*\*



### S-HORIZON42M



\*Length 117"  
Depth 28 3/4"  
Height 36 1/2" (± 1")

Presented in Anthracite with DEKTON® Vera (2cm) and Hestan Outdoors appliances.\*\*

\* Including 3/4" countertop nosing.  
\*\* Countertop and appliances are sold separately.

## Prairie Series



### S-PRAIRIE36



\*Length 111"  
Depth 28 3/4"  
Height 36 1/2" (± 1")

Presented in Clay with DEKTON® Portum (2cm) and Lynx Professional appliance.\*\*



### S-PRAIRIE36M



\*Length 111"  
Depth 28 3/4"  
Height 36 1/2" (± 1")

Presented in Pewter with DEKTON® Nilium (2cm) and Sedona by Lynx appliance.\*\*



### S-PRAIRIE42



\*Length 117"  
Depth 28 3/4"  
Height 36 1/2" (± 1")

Presented in Anthracite with DEKTON® Opera (2cm) and Twin Eagles appliance.\*\*



### S-PRAIRIE42M



\*Length 117"  
Depth 28 3/4"  
Height 36 1/2" (± 1")

Presented in Clay with DEKTON® Edora (2cm) and Wolf appliance.\*\*

\* Including 3/4" countertop nosing.  
\*\* Countertop and appliances are sold separately.

## Lakeshore Series



### S-LAKESHORE36



\*Length 132"  
Depth 28 3/4"  
Height 36 1/2" (± 1")

Presented in Pewter with DEKTON® Fossil (2cm) and Alfresco appliances.\*\*



### S-LAKESHORE36M



\*Length 132"  
Depth 28 3/4"  
Height 36 1/2" (± 1")

Presented in Anthracite with DEKTON® Portum (2cm) and Aspire by Hestan appliances.\*\*



### S-LAKESHORE42



\*Length 138"  
Depth 28 3/4"  
Height 36 1/2" (± 1")

Presented in Clay with DEKTON® Fossil (2cm) and Blaze appliances.\*\*



### S-LAKESHORE42M



\*Length 138"  
Depth 28 3/4"  
Height 36 1/2" (± 1")

Presented in Pewter with DEKTON® Opera (2cm) and Coyote appliances.\*\*

\* Including 3/4" countertop nosing.  
\*\* Countertop and appliances are sold separately.

## Spring Series



### S-SPRING36



\*Length 132"  
Depth 28 3/4"  
Height 36 1/2" (± 1")

Presented in Anthracite with DEKTON® Nilium (2cm) and DCS appliances.\*\*



### S-SPRING36M



\*Length 132"  
Depth 28 3/4"  
Height 36 1/2" (± 1")

Presented in Clay with DEKTON® Edora (2cm) and Hestan Outdoors appliances.\*\*



### S-SPRING42



\*Length 138"  
Depth 28 3/4"  
Height 36 1/2" (± 1")

Presented in Pewter with DEKTON® Nilium (2cm) and Lynx Professional appliances.\*\*



### S-SPRING42M



\*Length 138"  
Depth 28 3/4"  
Height 36 1/2" (± 1")

Presented in Anthracite with DEKTON® Vera (2cm) and Sedona by Lynx appliances.\*\*

\* Including 3/4" countertop nosing.  
\*\* Countertop and appliances are sold separately.

## Coral Series



### S-CORAL36



\*Length 135"  
Depth 28 3/4"  
Height 36 1/2" (± 1")

Presented in Clay with DEKTON® Opera (2cm) and Wolf appliances.\*\*



### S-CORAL36M



\*Length 135"  
Depth 28 3/4"  
Height 36 1/2" (± 1")

Presented in Pewter with DEKTON® Fossil (2cm) and Twin Eagles appliances.\*\*



### S-CORAL42



\*Length 141"  
Depth 28 3/4"  
Height 36 1/2" (± 1")

Presented in Anthracite with DEKTON® Portum (2cm) and Alfresco appliances.\*\*



### S-CORAL42M



\*Length 141"  
Depth 28 3/4"  
Height 36 1/2" (± 1")

Presented in Clay with DEKTON® Edora (2cm) and Aspire by Hestan appliances.\*\*

\* Including 3/4" countertop nosing.  
\*\* Countertop and appliances are sold separately.

## Island | Bar | Storage Series



### S-VERMONT



\*Length 90"  
 Depth 28 3/4"  
 Height 36 1/2" (± 1")

Presented in Anthracite with DEKTON® Opera (2cm). \*\*



### S-SOLSTICE



\*Length 90"  
 Depth 28 3/4"  
 Height 36 1/2" (± 1")

Presented in Clay with DEKTON® Portum (2cm).\*\*



### S-SKYE



\*Length 93"  
 Depth 28 3/4"  
 Height 36 1/2" (± 1")

Presented in Pewter with DEKTON® Fossil (2cm).\*\*

\* Including 3/4" countertop nosing.  
 \*\* Countertop and appliances are sold separately.

## Island | Bar | Storage Series



### S-FIJI



\*Length 72"  
 Depth 28 3/4"  
 Height 36 1/2" (± 1")

Presented in Anthracite with DEKTON® Vera (2cm). \*\*



### S-EQUINOX



\*Length 87"  
 Depth 28 3/4"  
 Height 36 1/2" (± 1")

Presented in Clay with DEKTON® Opera (2cm). \*\*

\* Including 3/4" countertop nosing.  
 \*\* Countertop and appliances are sold separately.



# Powder Coated Accessories

## Full Depth Shelf

### **S-SHELF Accessory (S-SHELF-1)**

One (1) full depth shelf accessory for the 21" utility cabinet. Compatible with the Universal Track System and can be mounted at various heights. Thick marine grade aluminum construction with Super Durable powder coated finish and all outdoor grade 304 stainless steel hardware.

### **S-SHELF Accessory Bundle (S-SHELF-2)**

Two (2) full depth shelf accessories for the 21" utility cabinet. Compatible with the Universal Track System and can be mounted at various heights. Thick marine grade aluminum construction with Super Durable powder coated finish and all outdoor grade 304 stainless steel hardware.



## Refuse

### **S-GBG Accessory (S-GBG)**

Pull-out refuse and recycling accessory for 21" utility cabinet. Includes 2 (18 qt.) plastic bins. Compatible with the Universal Track System and can be mounted at various heights. Thick marine grade aluminum construction with Super Durable powder coated finish and all 304 stainless steel hardware.

### **S-DR and S-GBG Accessory Bundle (S-DR-GBG)**

Includes one (1) pull-out refuse and recycling accessory and one (1) heavy duty pull-out drawer accessory. Thick marine grade aluminum construction with Super Durable powder coated finish and all outdoor grade 304 stainless steel hardware.



## Pull-Out Drawer

### **S-DR Accessory (S-DR-1)**

One Heavy Duty Drawer Accessory for the 21" utility cabinet. Compatible with the Universal Track System and can be mounted at various heights. Thick marine grade aluminum construction with Super Durable powder coated finish and all outdoor grade 304 stainless steel hardware.

### **S-DR Accessory Bundle (S-DR-2)**

Two (2) Heavy Duty Drawer Accessory for the 21" utility cabinet. Compatible with the Universal Track System and can be mounted at various heights. Thick marine grade aluminum construction with Super Durable powder coated finish and all outdoor grade 304 stainless steel hardware.

### **S-DR Accessory Bundle (S-DR-3)**

Three (3) Heavy Duty Drawer Accessory for the 21" utility cabinet. Compatible with the Universal Track System and can be mounted at various heights. Thick marine grade aluminum construction with Super Durable powder coated finish and all outdoor grade 304 stainless steel hardware.



# Classics Price List

Description	SKU	MSRP (USD)
<b>SIERRA Series</b>		
SIERRA 36 Outdoor Kitchen	S-SIERRA36	\$6,695
SIERRA 36 Outdoor Kitchen Backpanel Kit	S-SIERRA36-BCKP	\$975
SIERRA 42 Outdoor Kitchen	S-SIERRA42	\$6,895
SIERRA 42 Outdoor Kitchen Backpanel Kit	S-SIERRA42-BCKP	\$995
<b>BOREAL Series</b>		
BOREAL 36 Outdoor Kitchen	S-BOREAL36	\$8,895
BOREAL 36M Outdoor Kitchen	S-BOREAL36M	\$8,895
BOREAL 36 Outdoor Kitchen Backpanel Kit	S-BOREAL36-BCKP	\$1,245
BOREAL 42 Outdoor Kitchen	S-BOREAL42	\$9,095
BOREAL 42 M Outdoor Kitchen	S-BOREAL42M	\$9,095
BOREAL 42 Outdoor Kitchen Backpanel Kit	S-BOREAL42-BCKP	\$1,265
<b>HORIZON Series</b>		
HORIZON 36 Outdoor Kitchen	S-HORIZON36	\$6,995
HORIZON 36M Outdoor Kitchen	S-HORIZON36M	\$6,995
HORIZON 36 Outdoor Kitchen Backpanel Kit	S-HORIZON36-BCKP	\$975
HORIZON 42 Outdoor Kitchen	S-HORIZON42	\$7,195
HORIZON 42 M Outdoor Kitchen	S-HORIZON42M	\$7,195
HORIZON 42 Outdoor Kitchen Backpanel Kit	S-HORIZON42-BCKP	\$995
<b>PRAIRIE Series</b>		
PRAIRIE 36 Outdoor Kitchen	S-PRAIRIE36	\$8,855
PRAIRIE 36M Outdoor Kitchen	S-PRAIRIE36M	\$8,855
PRAIRIE 36 Outdoor Kitchen Backpanel Kit	S-PRAIRIE36-BCKP	\$1,265
PRAIRIE 42 Outdoor Kitchen	S-PRAIRIE42	\$9,055
PRAIRIE 42 M Outdoor Kitchen	S-PRAIRIE42M	\$9,055
PRAIRIE 42 Outdoor Kitchen Backpanel Kit	S-PRAIRIE42-BCKP	\$1,285

Description	SKU	MSRP (USD)
<b>LAKESHORE Series</b>		
LAKESHORE 36 Outdoor Kitchen	S-LAKESHORE36	\$11,095
LAKESHORE 36M Outdoor Kitchen	S-LAKESHORE36M	\$11,095
LAKESHORE 36 Outdoor Kitchen Backpanel Kit	S-LAKESHORE36-BCKP	\$1,545
LAKESHORE 42 Outdoor Kitchen	S-LAKESHORE42	\$11,295
LAKESHORE 42 M Outdoor Kitchen	S-LAKESHORE42M	\$11,295
LAKESHORE 42 Outdoor Kitchen Backpanel Kit	S-LAKESHORE42-BCKP	\$1,565
<b>SPRING Series</b>		
SPRING 36 Outdoor Kitchen	S-SPRING36	\$9,275
SPRING 36M Outdoor Kitchen	S-SPRING36M	\$9,275
SPRING 36 Outdoor Kitchen Backpanel Kit	S-SPRING36-BCKP	\$1,245
SPRING 42 Outdoor Kitchen	S-SPRING42	\$9,475
SPRING 42 M Outdoor Kitchen	S-SPRING42M	\$9,475
SPRING 42 Outdoor Kitchen Backpanel Kit	S-SPRING42-BCKP	\$1,265
<b>CORAL Series</b>		
CORAL 36 Outdoor Kitchen	S-CORAL36	\$9,195
CORAL 36M Outdoor Kitchen	S-CORAL36M	\$9,195
CORAL 36 Outdoor Kitchen Backpanel Kit	S-CORAL36-BCKP	\$1,265
CORAL 42 Outdoor Kitchen	S-CORAL42	\$9,395
CORAL 42 M Outdoor Kitchen	S-CORAL42M	\$9,395
CORAL 42 Outdoor Kitchen Backpanel Kit	S-CORAL42-BCKP	\$1,285

Description	SKU	MSRP (USD)
<b>ISLAND   BAR   STORAGE</b>		
EQUINOX Outdoor Kitchen	S-EQUINOX	\$7,225
EQUINOX Outdoor Kitchen Backpanel Kit	S-EQUINOX-BCKP	\$1,095
FIJI Outdoor Kitchen	S-FIJI	\$6,575
FIJI Outdoor Kitchen Backpanel Kit	S-FIJI-BCKP	\$865
SOLSTICE Outdoor Kitchen	S-SOLSTICE	\$7,725
SOLSTICE Outdoor Kitchen Backpanel Kit	S-SOLSTICE-BCKP	\$1,115
SKYE Outdoor Kitchen	S-SKYE	\$6,395
SKYE Outdoor Kitchen Backpanel Kit	S-SKYE-BCKP	\$845
VERMONT Outdoor Kitchen	S-VERMONT	\$5,915
VERMONT Outdoor Kitchen Backpanel Kit	S-VERMONT-BCKP	\$825

---



---

### Powder Coated Accessories

#### Pull-Out Drawer

S-DR Accessory (1)	S-DR-1	\$425
S-DR Accessory Bundle (2)	S-DR-2	\$725
S-DR Accessory Bundle (3)	S-DR-3	\$895

#### Full Depth Shelf

S-SHELF Accessory (1)	S-SHELF-1	\$230
S-SHELF Accessory Bundle (2)	S-SHELF-2	\$415

#### Refuse

S-GBG Accessory	S-GBG	\$415
S-DR and S-GBG Accessory Bundle	S-DR-GBG	\$695

*Did You Know?*



You can combine our Classics to activate your outdoor space.

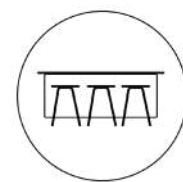
# Cooking x Island



# Cooking x Bar



LAKESHORE 36 Outdoor Kitchen



SOLSTICE Outdoor Kitchen



FIJI Outdoor Kitchen



SIERRA 36 Outdoor Kitchen

## Cooking × Storage



PRAIRIE 36 Outdoor Kitchen

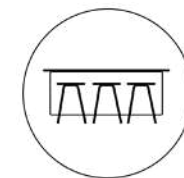


EQUINOX Outdoor kitchen

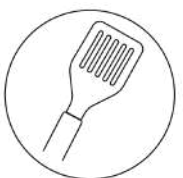
## Cooking × Island × Bar



VERMONT Outdoor Kitchen



EQUINOX Outdoor Kitchen



LAKESHORE 42 M Outdoor Kitchen

# Cooking × Island × Storage



HORIZON 36 Outdoor Kitchen



EQUINOX Outdoor kitchen



SKYE Outdoor kitchen

*Need Something  
More Customized?*

Our in-house Outdoor Design  
Specialists are here to help



## URBAN BONFIRE'S CUSTOM OFFERING

# Our Custom Design Process

We are dedicated to creating designs that are expressions of our clients' individuality. This passion for creative design makes the art of developing custom outdoor kitchen solutions highly engaging and interactive. We believe that custom outdoor kitchen systems should reflect the lifestyle, aesthetic and spatial parameters of every individual client.

Work with a member of our passionate and professional design team to experience your outdoor cooking and entertainment space possibilities.



## Before We Start...

Gather basic dimensions of your space, plans, sketches, inspirational photos and any additional ideas for the vision of your space.

### Step 1 Start Your Design Process

Your custom design process begins with a one-on-one virtual consultation with a dedicated Urban Bonfire designer to gather information about your lifestyle, aesthetic preferences and basic spatial parameters of your new outdoor room.

This will allow our team to determine the most appropriate layout and materials and present a custom solution that incorporates selected outdoor cooking appliances with integrated storage, functionality and counter space.

Try our simple **Request for Design form** as a first step to planning your new outdoor space and prepare for your consultation.

Our design team will work with you and/or your design professional to develop a preliminary layout that can be modified as necessary to meet with most spacial, aesthetic and budgetary parameters.

“How will your outdoor space integrate with the indoors for day to day and larger entertainment uses?”

“What types of cooking do you enjoy and for how many people?”

“What types of activities do you hope to enjoy in your new outdoor living space?”

Following the initial consultation, our design team will create a personalized proposal for your project.

### Step 2 Design & Planning

Our proposal includes beautiful 3D renderings and 2D plans, as well as a detailed quote for your project. Appliances and countertop sold separately.

Design proposals are presented in a comprehensive package via a virtual meeting with your Urban Bonfire designer.



**Step 3  
Referral to an Authorized Urban Bonfire Dealer Partner**

Urban Bonfire outdoor kitchen cabinets, planters and accessories are available through our growing network of dealers across North America.

**Included in the Urban Bonfire experience**



**Personalized Service from one of our Elite Designers**



**1-3 Initial Concepts**



**Technical 2D Plans and 3D Renderings**

**Step 4  
Production**

Once the design is approved, we begin producing your kitchen in our Montreal facility. Lead times are typically about 6 weeks. US clients receive orders from our Champlain, NY distribution center. Canadian, European and Middle Eastern clients receive their orders from our Montreal, Canada distribution center.

**Step 5  
Quality Control & Packaging**

Upon completion of our production process, each project must pass quality control and staging before final crating and shipping. With your kitchen staged in our bright assembly facility, each cabinet is inspected and numbered in accordance with your custom designed plan. With final inspection and staging complete, the fully assembled cabinets are packaged in their own, custom made, packaging and prepared for shipping.



**Final Design**



**Installation Guide, Videos & Support  
Warranty Registration (after installation)**



# Powder Coating Options

Our custom formulated "Super Durable" finishes are applied to AAMA 2604 standards. A slight textured finish adds depth to the color and resists fingerprints. Available in 6 curated designer-inspired colors.



**Onyx**  
A deep, dark black that is sure to create a standout piece in any environment.



**Anthracite**  
Modern dark gray with a slate undertone that works beautifully in concrete and contemporary urban environments.



**Artesan**  
A dark gray finish with a warm bronze undertone. Designed to accent wood and natural limestone while still creating a welcome contrast through its depth of tone.



**Chantilly**  
This crisp white works in almost any outdoor setting. Reflecting tones of silk and clean linen.



**Clay**  
An elegant and versatile rich beige. Enhances the mood and atmosphere of any classic outdoor living space.



**Pewter**  
Warm dark gray with bronze undertones. Adds a refined touch to any outdoor environment.

# Handle Options

Each cabinet includes our premium outdoor grade 304 stainless steel handle. For added personalization and design, handle upgrades in powder coated finishes are available (optimal choice for heavy saltwater climates).



**Stainless Steel**  
(included)

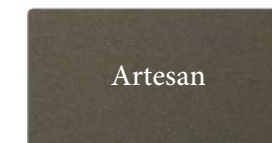
Upgrade Options  
**Powder Coating Colors**



**MSRP**  
USD \$12



USD \$12



USD \$12



USD \$12



USD \$12



USD \$12

Upgrade Options

## “Living Finish” Bronze Handles

For added personalization and design, handle upgrades in solid bronze are available. Our “living finishes” will weather over time as natural bronze changes tone and character as it gains charm.

Model	MSRP
Pull Handle (H-341) .....	USD \$80
Urban Handle (H-337) .....	USD \$80
Bauhaus Handle (H-3312) .....	USD \$80



**White Bronze**  
(WL)



**Light Bronze**  
(LT)



**Black Bronze**  
(BZ)



**Pull**  
Handle



**Urban**  
Handle



**Bauhaus**  
Handle



## Grill Base Cabinets

Thick marine grade aluminum construction. All outdoor grade 304 stainless steel hardware. Includes self-leveling toe kick, choice of powder coating and solid 304 stainless steel round handles. Grill base cabinets are specified 4"-6" larger than the grill specified.

Model	MSRP
36" Grill Base Cabinet (A-GB36) .....	USD \$2,915
42" Grill Base Cabinet (A-GB42) .....	USD \$3,095
48" Grill Base Cabinet (A-GB48) .....	USD \$3,360
62" Grill Base Cabinet (A-GB62) .....	USD \$4,030



The custom trim kit allows the cabinet to professionally integrate with most major outdoor appliance brands and sizes.





Optional Feature

## Warming Drawer Insert

Structural insert for warming drawers. Made of thick marine grade construction and includes choice of powder coating.

Model	MSRP
A-FP-WARMINGDRAWER-INSERT .....	USD \$790

## Side and Power Burner Cabinets

Thick marine grade aluminum construction. All outdoor grade 304 stainless steel hardware. Includes self-leveling toe kick, choice of powder coating and solid outdoor grade 304 stainless steel round handles. Single, Dual and Power Burner cabinets are specified 6" larger than the appliance.

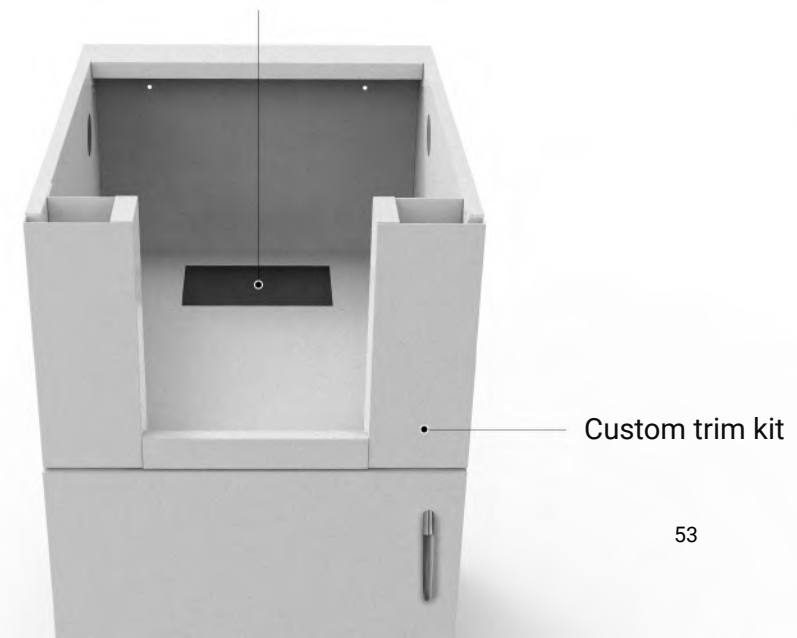
Model	MSRP
21" Side Burner Cabinet (A-BB21) .....	USD \$2,370
30" Power Burner Cabinet (A-BB30) .....	USD \$2,890



A-BB30

A-BB21

Space for conduits



Custom trim kit

## Kamado Cabinets

Kamado style smoker cabinet. Thick marine grade aluminum construction. Includes self-leveling toe kick and choice of powder coating.

Model	MSRP
27" Closed Kamado Cabinet (A-BE27-C).....	USD \$2,120
27" Open Kamado Cabinet (A-BE27-O).....	USD \$1,480
33" Open Kamado Cabinet (A-BE33-O-STD) .....	USD \$1,755



For best results, a piece of countertop should be planned underneath the base and Kamado "feet" should be used.

## Utility Cabinets

Utility base storage cabinet with Universal Track keyhole system for accessories. Thick marine grade aluminum construction. All outdoor grade 304 stainless steel hardware. Includes self-leveling toe kick, choice of powder coating and solid outdoor grade 304 stainless steel round handles.

Model	MSRP
12" Utility Cabinet (A-BF12-U) .....	USD \$1,775
18" Utility Cabinet (A-BF18-U) .....	USD \$2,020
21" Utility Cabinet (A-BF21-U) .....	USD \$2,065
24" Utility Cabinet (A-BF24-U) .....	USD \$2,295
30" Utility Cabinet (A-BF30-U) .....	USD \$2,630



### Universal Track System

Every utility cabinet includes our Universal Track System, to allow for easy customization and maximize the efficiency and functionality.

# Large Utility Cabinets

Utility base storage cabinet with Universal Track keyhole system for accessories. Thick marine grade aluminum construction. All outdoor grade 304 stainless steel hardware. Includes self-leveling toe kick, choice of powder coating and solid outdoor grade 304 stainless steel round handles.

Model	MSRP
36" Utility Cabinet (A-BF36-U).....	USD \$2,915
42" Utility Cabinet (A-BF42-U) .....	USD \$3,080
48" Utility Cabinet (A-BF48-U) .....	USD \$3,265



A-BF48-U. Shown with A-SHELF48.

# Accessories for Utility Cabinets



<b>Pull-Out Storage Peg System (A-PEG12)</b> (shown with A-DR12) .....	USD \$715
---	-----------



## Heavy Duty Retractable Drawer Accessory (up to three per cabinet)

12" Heavy Duty Retractable Drawer (A-DR12) .....	USD \$400
18" Heavy Duty Retractable Drawer (A-DR18) .....	USD \$450
21" Heavy Duty Retractable Drawer (A-DR21) .....	USD \$465
24" Heavy Duty Retractable Drawer (A-DR24) .....	USD \$515
30" Heavy Duty Retractable Drawer (A-DR30) .....	USD \$580



## Full Depth Adjustable Height Shelf (up to two per cabinet)

12" Full Depth Shelf (A-SHELF12) .....	USD \$205
18" Full Depth Shelf (A-SHELF18) .....	USD \$240
21" Full Depth Shelf (A-SHELF21) .....	USD \$255
24" Full Depth Shelf (A-SHELF24) .....	USD \$260
30" Full Depth Shelf (A-SHELF30) .....	USD \$315
36" Full Depth Shelf (A-SHELF36) .....	USD \$335
42" Full Depth Shelf (A-SHELF42) .....	USD \$410
48" Full Depth Shelf (A-SHELF48) .....	USD \$440



## Pull-out Refuse and Recycling Accessory (shown with A-DR21)

12" Pull-out Refuse and Recycling Accessory (A-GBG12).....	USD \$430
18" Pull-out Refuse and Recycling Accessory (A-GBG18).....	USD \$445
21" Pull-out Refuse and Recycling Accessory (A-GBG21).....	USD \$455
24" Pull-out Refuse and Recycling Accessory (A-GBG24).....	USD \$470

## Storage Cabinet with Single Drawer

Storage cabinet equipped with single drawer, stainless steel soft close drawer slides and centered shelf. Thick marine grade aluminum construction. All outdoor grade 304 stainless steel hardware. Includes self-leveling toe kick, choice of powder coating and solid outdoor grade 304 stainless steel round handles.

Model	MSRP
18" Storage Cabinet with Single Drawer (A-BR18) .....	USD \$2,425
21" Storage Cabinet with Single Drawer (A-BR21) .....	USD \$2,470
24" Storage Cabinet with Single Drawer (A-BR24) .....	USD \$2,490



Elegant storage capacity for multiple items such as plates, utensils, cookware and more.



## Pull-out Refuse Cabinet with Single Drawer

Pull-out refuse cabinet with single top drawer, equipped with stainless steel soft close drawer slides and two (2) heavy duty plastic refuse bins. Thick marine grade aluminum construction. All outdoor grade 304 stainless steel hardware. Includes self-leveling toe kick, choice of powder coating and solid outdoor grade 304 stainless steel round handles.

Model	MSRP
18" Pull-out Refuse Cabinet with Single Drawer (A-BG18) .....	USD \$2,785
21" Pull-out Refuse Cabinet with Single Drawer (A-BG21) .....	USD \$2,805
24" Pull-out Refuse Cabinet with Single Drawer (A-BG24) .....	USD \$2,840



## Sink Cabinets

Thick marine grade aluminum construction. All outdoor grade 304 stainless steel hardware. Includes self-leveling toe kick, choice of powder coating and solid outdoor grade 304 stainless steel round handles.

Model	MSRP
12" Sink Cabinet (A-BF12-S) .....	USD \$1,605
18" Sink Cabinet (A-BF18-S) .....	USD \$1,720
21" Sink Cabinet (A-BF21-S) .....	USD \$1,765
24" Sink Cabinet (A-BF24-S) .....	USD \$1,995
30" Sink Cabinet (A-BF30-S) .....	USD \$2,330
36" Sink Cabinet (A-BF36-S) .....	USD \$2,615
42" Sink Cabinet (A-BF42-S) .....	USD \$2,780
48" Sink Cabinet (A-BF48-S) .....	USD \$2,965



## Undercounter Appliance Kit

Structural finishing kits for outdoor refrigerators, ice makers, keg tappers or freezers. Thick marine grade aluminum construction. Includes front countertop support spacer and back spacing panel, self-leveling toe kick and choice of powder coating.

Model	MSRP
15" Undercounter Appliance Kit (A-FRDG15).....	USD \$345
18" Undercounter Appliance Kit (A-FRDG18).....	USD \$395
20 3/4" Undercounter Appliance Kit (A-FRDG20.75).....	USD \$400
21 1/2" Undercounter Appliance Kit (A-FRDG21.5).....	USD \$410
22" Undercounter Appliance Kit (A-FRDG22).....	USD \$420
24" Undercounter Appliance Kit (A-FRDG24).....	USD \$420
28 1/2" Undercounter Appliance Kit (A-FRDG28.5).....	USD \$440
30" Undercounter Appliance Kit for two 15" combination (A-FRDG30).....	USD \$440
36" Reinforced Undercounter Appliance Kit (A-FRDGRIN36).....	USD \$780
39" Reinforced Undercounter Appliance Kit for one 24" and one 15" combination (A-FRDGRIN-39) .....	USD \$885
48" Reinforced Undercounter Appliance Kit for two 24" combination (A-FRDGRIN-48).....	USD \$1,110
24 7/8" Dishwasher Kit (A-DW24.875).....	USD \$410





## Undercounter Appliance Overlay Panels

Give a seamless look to your outdoor kitchen with appliance overlay panels. Available for 15" and 24" undercounter appliances. Handle included separately, to be installed on site. Panel fabricated to the specifications provided by appliance manufacturer.

Models	MSRP
A-FPANEL-15 .....	USD \$640
A-FPANEL-15-2DRAWER .....	USD \$655
A-FPANEL-24 .....	USD \$675
A-FPANEL-24-2DRAWER .....	USD \$695 - \$725



## Corner Module

32 3/4" corner support module. Thick marine grade aluminum construction. Includes self-leveling toe kick and choice of powder coating.

Model	MSRP
32 3/4" Corner Module (A-CRNR) .....	USD \$1,500



## Flush Mount Cabinet

21" flush mount drawer cabinet with full depth heavy duty drawers (3) and stainless steel soft close slides. Thick marine grade aluminum construction. All outdoor grade 304 stainless steel hardware. Includes self-leveling toe kick, choice of powder coating and outdoor grade solid 304 stainless steel round handles.

Model	MSRP
21" Flush Mount Cabinet (A-BD21) .....	USD \$3,275



## Spacer Module

4" module designed for added structural support of countertop if/where applicable. Includes self-leveling toe kick and choice of powder coating. Available with or without cutout for waterproof plug box and cover (supplied and installed by local electrician).

Model	MSRP
4" Cutout Spacer Module (A-BF4) .....	USD \$570
4" Spacer Module (A-BF4-C) .....	USD \$570



## Open Shelving Cabinets

Flexible storage for cooking and entertaining needs. Thick marine grade aluminum construction. Includes self-leveling toe kick, choice of oiled natural IPE wood or powder coated marine grade aluminum internal slats.

Model	Slats Material	MSRP
24" Open Shelving Cabinet (A-BO24-M) .....	Marine grade aluminum .....	USD \$2,245
24" Open Shelving Cabinet (A-BO24-W) .....	IPE wood .....	USD \$2,805
27" Open Shelving Cabinet (A-BO27) .....		USD \$1,555



Ideal for platters, plates, glasses and more.



## Side Trims

Custom fillers for outdoor kitchens that are between walls. Thick marine grade aluminum construction and includes choice of powder coating.

Model	Width	MSRP
Filler Style .....	$\frac{3}{4}$ " - 2" .....	USD \$130
Panel Style .....	2 $\frac{1}{4}$ " and over .....	USD \$330 - \$475

### Filler Style

Full height single piece trim filler. To be cut to height and fastened to cabinet side during installation.

$\frac{3}{4}$ " - 2" wide.



### Panel Style

Custom filler panel. Includes self-leveling toe kick and choice of powder coating.

2  $\frac{1}{4}$ " wide and over.



## Regular Toe Kicks

Regular front toe kicks. Included with each cabinet. Thick marine grade aluminum construction and choice of powder coating. Adapts to slope and outdoor site conditions.

Model	Length	Height	MSRP
Full Length Toe Kick (A-FULLTK-96x7).....	96" .....	7" .....	USD \$155
Corner for Full Length Toe Kick (A-FULLTK-CRNRx7) .....		7" .....	USD \$75



## Full Length Toe Kicks

Full length toe kick for a seamless look. Thick marine grade aluminum construction and includes choice of powder coating. To be cut to size on site.



# Finished Panels

## Back Panels

Aesthetic finished back panel. Thick marine grade aluminum construction. Includes self-leveling toe kick and choice of powder coating. Only required when the back of the kitchen is visible.

Model	MSRP
12" Back Panel (A-BCKP12) .....	USD \$260
18" Back Panel (A-BCKP18) .....	USD \$305
21" Back Panel (A-BCKP21) .....	USD \$325
24" Back Panel (A-BCKP24) .....	USD \$355
27" Back Panel (A-BCKP27) .....	USD \$385
30" Back Panel (A-BCKP30) .....	USD \$420
33" Back Panel (A-BCKP33) .....	USD \$430
36" Back Panel (A-BCKP36) .....	USD \$470
42" Back Panel (A-BCKP42) .....	USD \$525
48" Back Panel (A-BCKP48) .....	USD \$580
62" Back Panel (A-BCKP62) .....	USD \$750
Corner Back Panel (A-BCKP-CRNR) .....	USD \$930



## End Panels

Aesthetic finished end panel. Thick marine grade aluminum construction. Includes self-leveling toe kick and choice of powder coating. Only required when the side(s) of the kitchen are visible.

Model	MSRP
28 3/4" End Panel (A-ENDP28) .....	USD \$420
32" End Panel (A-ENDP32) .....	USD \$455
38 5/8" End Panel (A-ENDP38) .....	USD \$470



## Louvered Back Panels

Aesthetic louvered ventilated finished back panel. Thick marine grade aluminum construction. Includes self-leveling toe kick and choice of powder coating.

Model	MSRP
21" Louvered Back Panel (A-BCKP21-V) .....	USD \$385
30" Louvered Back Panel (A-BCKP30-V) .....	USD \$470
36" Louvered Back Panel (A-BCKP36-V) .....	USD \$525
42" Louvered Back Panel (A-BCKP42-V) .....	USD \$580
48" Louvered Back Panel (A-BCKP48-V) .....	USD \$610
62" Louvered Back Panel (A-BCKP62-V) .....	USD \$895



Ventilated back panels create a finished look when back of kitchen is visible. Equipped with louvered slats for equipment venting. (48" and 30" shown)



Venting requirements may vary based on site conditions, local codes, equipment specifications and gas types. Check with your local licensed professional to ensure full and complete compliance to codes.

## Countertop Planter

Designed for small herb gardens or annuals, this planter sits directly on the countertop. Fully welded and made of thick marine grade aluminum. Includes choice of powder coating in any one of our standard colors.



Model	MSRP
18 x 6 x 8" Countertop Planter (A-PLANTER-COUNTER-18x6x8) .....	USD \$570
24 x 6 x 8" Countertop Planter (A-PLANTER-COUNTER-24x6x8) .....	USD \$615
30 x 6 x 8" Countertop Planter (A-PLANTER-COUNTER-30x6x8) .....	USD \$655



A-PLANTER-COUNTER-18x6x8



A-PLANTER-COUNTER-24x6x8



A-PLANTER-COUNTER-30x6x8

## Technical Details - Cube, Partition & Trough Planters

Fully welded thick marine grade aluminum, powder coated and built to last. The drainage holes at the base ensure proper drainage and prevent over watering. Our series of Countertop Planters are designed for a minimal and sleek look, ideal for herbs, flowers and other annuals.



## Cube Planter

Designed to fill a space without adding extra storage, a Cube Planter is a beautiful and functional addition to an outdoor kitchen. Freestanding, fully welded and made of thick marine grade aluminum. Includes choice of powder coating in any one of our standard colors.

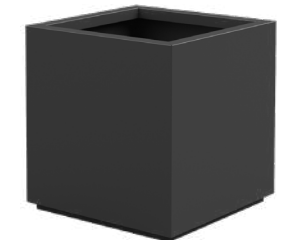
Model	MSRP
18 x 18 x 18" Cube Planter (A-PLANTER-CUBE-18x18x18) .....	USD \$1,745
21 x 21 x 21" Cube Planter (A-PLANTER-CUBE-21x21x21) .....	USD \$1,910
24 x 24 x 24" Cube Planter (A-PLANTER-CUBE-24x24x24) .....	USD \$2,175
28 x 28 x 28" Cube Planter (A-PLANTER-CUBE-28x28x28) .....	USD \$2,480
36 x 36 x 36" Cube Planter (A-PLANTER-CUBE-36x36x36) .....	USD \$3,140



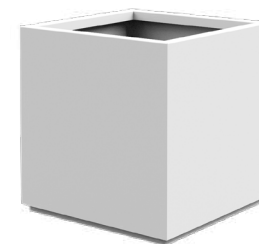
A-PLANTER-CUBE-18x18x18



A-PLANTER-CUBE-21x21x21



A-PLANTER-CUBE-24x24x24



A-PLANTER-CUBE-28x28x28



A-PLANTER-CUBE-36x36x36

# Partition Planter

Designed for placement behind a kitchen to create a freestanding “living” backsplash structure, Partition Planters are also ideal for delineating a space and creating more intimate environments.

Our Partition Planters offer the option of having an indented u-channel base to give a subtle elevation.

Option for direct ground placement (as shown below) is also available and creates a seamless backdrop to your Urban Bonfire kitchen.



## Model

	<b>MSRP</b>
36 x 10 x 42” Partition Planter (A-PLANTER-PARTITION-36x10x42) .....	USD \$2,175
36 x 10 x 42” Partition Planter No U-Channel (A-PLANTER-PARTITION-36x10x42-NC) .....	USD \$2,175
42 x 12 x 42” Partition Planter (A-PLANTER-PARTITION-42x12x42) .....	USD \$2,385
42 x 12 x 42” Partition Planter No U-Channel (A-PLANTER-PARTITION-42x12x42-NC) .....	USD \$2,385



A-PLANTER-PARTITION-42x12x42-NC

A-PLANTER-PARTITION-42x12x42



A-PLANTER-PARTITION-36x10x42



A-PLANTER-PARTITION-36x10x42-NC



A-PLANTER-PARTITION-42x12x42



A-PLANTER-PARTITION-42x12x42-NC

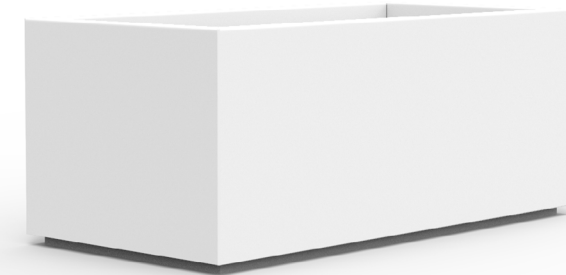
# Trough Planter

Designed for lower gardening plots, or as a convenient sitting space, a Trough Planter adds form and function to an outdoor environment. Freestanding, fully welded and made of thick marine grade aluminum. Includes choice of powder coating.

## Model

## MSRP

36 x 24 x 7" Trough Planter (A-PLANTER-TROUGH-36x24x7) .....	USD \$2,050
48 x 18 x 10" Trough Planter (A-PLANTER-TROUGH-48x18x10) .....	USD \$2,215
48 x 24 x 9" Trough Planter (A-PLANTER-TROUGH-48x24x9) .....	USD \$2,320
48 x 24 x 20" Trough Planter (A-PLANTER-TROUGH-48x24x20) .....	USD \$2,740
24 x 24" IPE Wood Bench Planter (A-PLANTER-WOODBENCH-24x24) .....	USD \$780



A-PLANTER-TROUGH-48x24x20



A-PLANTER-TROUGH-36x24x7



A-PLANTER-TROUGH-48x18x10



A-PLANTER-TROUGH-48x24x9



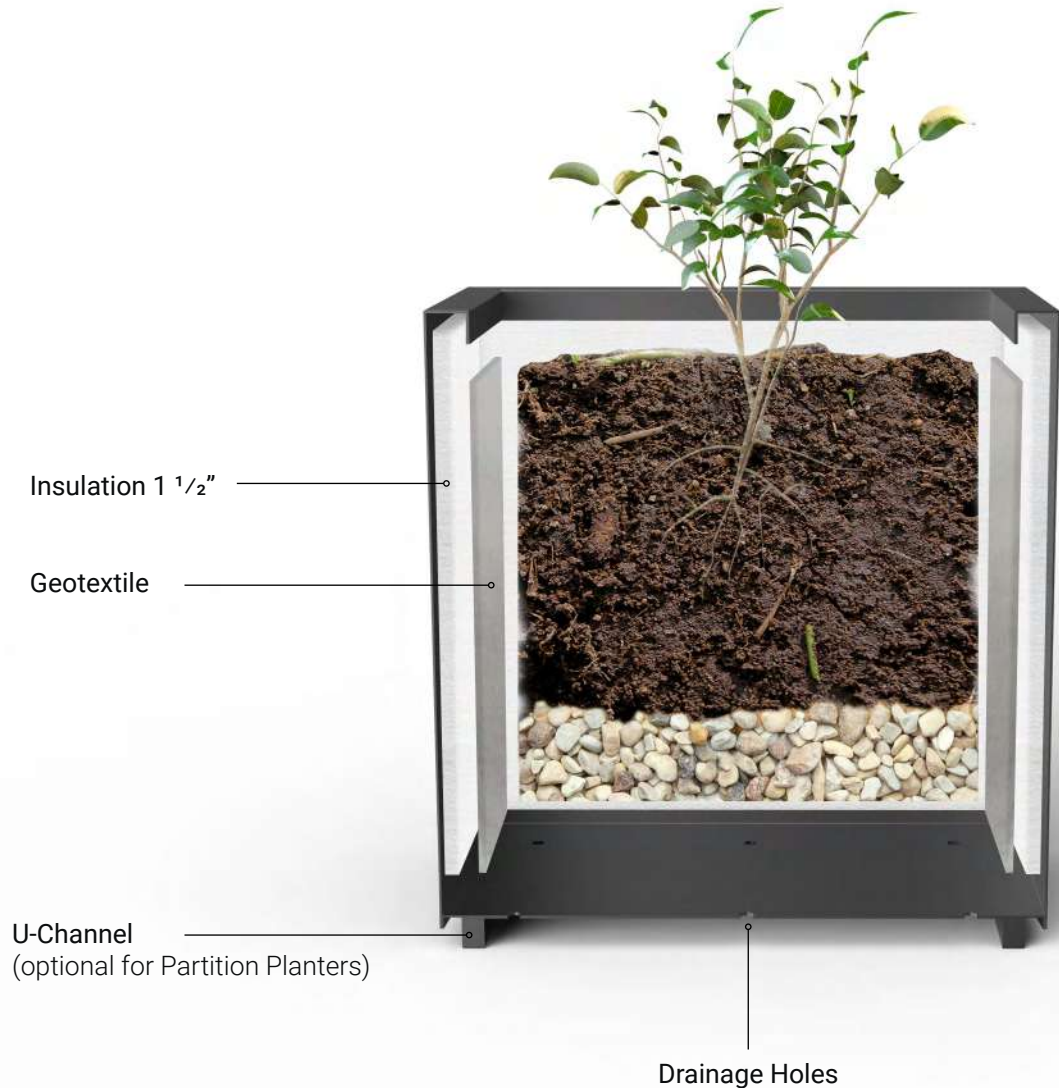
A-PLANTER-WOODBENCH-24x24

(Shown with A-PLANTER-TROUGH-48x24x20)



# Technical Details - Cube, Partition & Trough Planters

Fully welded thick marine grade aluminum, powder coated and built to last. Each Cube, Partition and Trough Planter comes equipped with pre-machined drainage holes and 1 1/2" geotextile covered insulation.



# Slatwall Backsplash

Our extruded aluminum modular backsplash system is available in our standard powder coating finishes. Designed to be both aesthetic and functional, these 6" tall panels can be configured to various heights and can house planters and other accessories.

Model	Width	Length	MSRP
Small Panel (A-SLATWALL-SMALL PANEL)	6"	6" - 48"	USD \$145
Large Panel (A-SLATWALL-LARGE PANEL)	6"	48 1/8" - 96"	USD \$250



Our backsplash system must be installed against an existing wall or structure. Installation requirements may vary based on site conditions, local codes, equipment specifications and other factors. Check with your local licensed professional to ensure full and complete compliance to codes.

## Clip-in Planters

Clip-in planter accessory for modular slatwall backsplash. Dimensions L6" x W12" x H6".

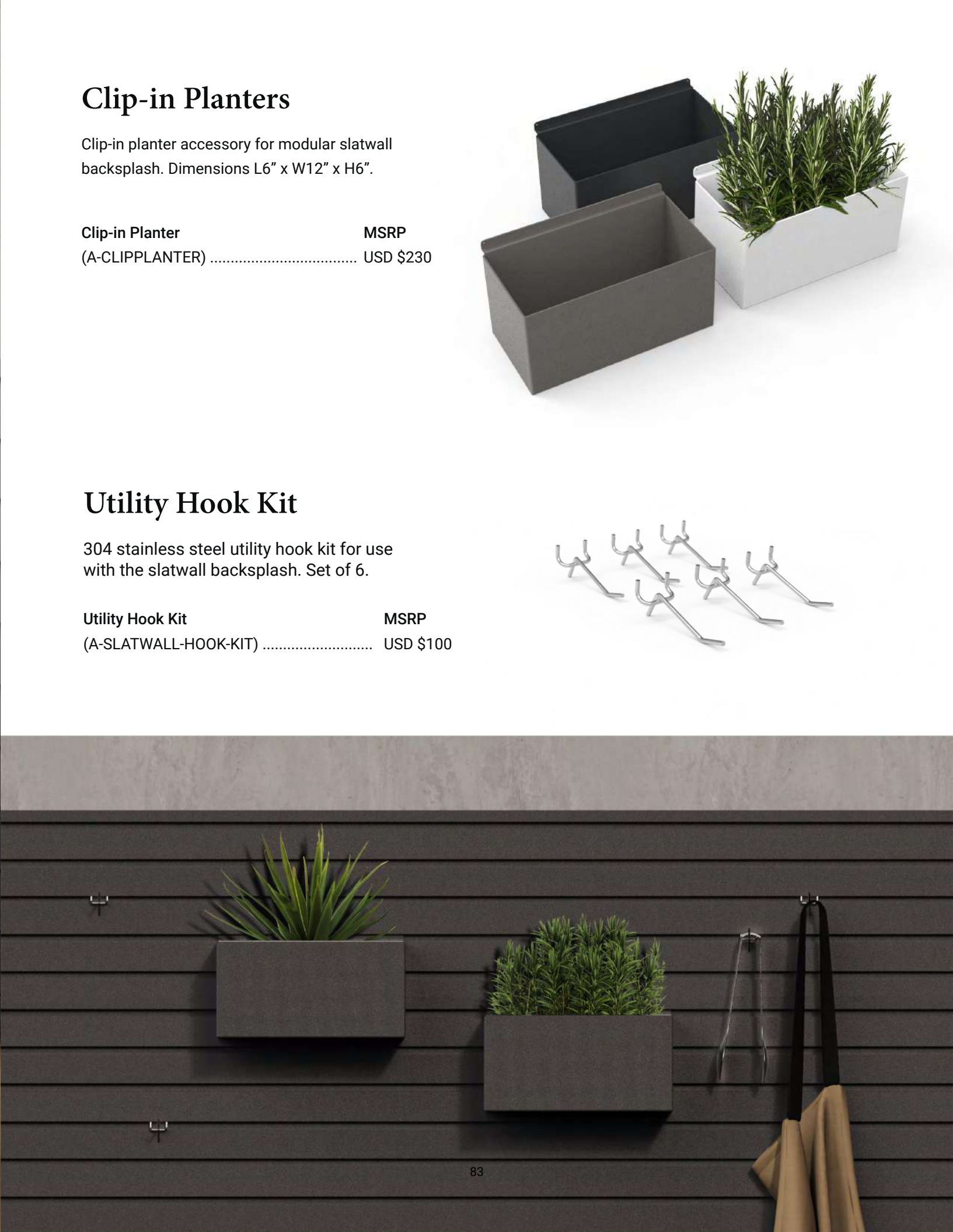
Clip-in Planter	MSRP
(A-CLIPPLANTER) .....	USD \$230



## Utility Hook Kit

304 stainless steel utility hook kit for use with the slatwall backsplash. Set of 6.

Utility Hook Kit	MSRP
(A-SLATWALL-HOOK-KIT) .....	USD \$100





## RESOURCES

### Ready to Design Your Kitchen Outdoors?

Start creating your dream kitchen by filling out one of the following forms. Looking for more information? Visit our Resources section at [urbanbonfire.com](http://urbanbonfire.com)

#### Photography Credits

Location: Vancouver, British Columbia

Dealer Partner: Kerrisdale Lumber

Design: Sherwood Outdoor Kitchens

Photography: Sherwood Outdoor Kitchens

Project details: Powder coating in Chantilly, stainless steel handles, Hestan Outdoors appliances.

# If You're Interested in our Classics

Fill out this  
Classics Order Sheet



Client/Project Name \_\_\_\_\_

Purchase Order # \_\_\_\_\_

## Step 1 Layout

Urban Bonfire's Classics collection offers a curation of our most popular configurations, colors and best selling products.

For more details, see all layouts on page 23 or visit our Classics section on [urbanbonfire.com](http://urbanbonfire.com) to customize your outdoor kitchen.

S-SIERRA36	S-LAKESHORE36M	S-BOREAL36
S-SIERRA42	S-LAKESHORE42	S-BOREAL36M
S-HORIZON36	S-LAKESHORE42M	S-BOREAL42
S-HORIZON36M	S-SPRING36	S-BOREAL42M
S-HORIZON42	S-SPRING36M	S-EQUINOX
S-HORIZON42M	S-SPRING42	S-FIJI
S-PRAIRIE36	S-SPRING42M	S-SKYE
S-PRAIRIE36M	S-CORAL36	S-SOLSTICE
S-PRAIRIE42	S-CORAL36M	S-VERMONT
S-PRAIRIE42M	S-CORAL42	
S-LAKESHORE36	S-CORAL42M	

**Note:** The kitchen layouts listed above are only compatible with  $\frac{3}{4}$ " (2 cm) countertop thickness (countertop not provided by Urban Bonfire®)

Step 2  
Appliance Brand

Urban Bonfire's Classics Program was developed for easy compatibility with the following industry leading brands. If you are working with another appliance brand, please contact us to start your custom design process. **NOTE: APPLIANCE IS NOT INCLUDED AND NOT PROVIDED BY URBAN BONFIRE®.**



Alfresco



Artisan by Alfresco



Blaze



Coyote



DCS



Edgestar



Hestan Outdoors



Aspire by Hestan



Lynx Professional



Sedona by Lynx



Napoleon



Twin Eagles



Wolf



XO Appliances

Step 3  
Accessory for Utility Cabinet

Every utility cabinet includes our *Universal Track System*. Numerous interior accessories options are available to maximize efficiency, functionality and usage of every cabinet.



**Drawer (S-DR)**

Heavy duty retractable drawer. Up to three (3) per utility cabinet. Can be mounted at various heights. Thick marine grade aluminum construction with super durable powder coated finish and all outdoor grade 304 stainless steel hardware.

1 Drawer (S-DR-1)

2 Drawers (S-DR-2)

3 Drawers (S-DR-3)



**Shelf (S-SHELF)**

Adjustable height shelf. Up to two (2) shelves per utility cabinet. Can be mounted at various heights. Thick marine grade aluminum construction with super durable powder coated finish and all outdoor grade 304 stainless steel hardware.

1 Shelf (S-SHELF-1)

2 Shelves (S-SHELF-2)



**Refuse (S-GBG)**

Retractable refuse and recycling kit (shown with drawer DR-21). Can be mounted at various heights. Thick marine grade aluminum construction with super durable powder coated finish and all 304 stainless steel hardware.

1 Refuse (S-GBG)

1 Drawer & 1 Refuse (S-DR-GBG)

**Step 4  
Back Panel Kit**

Every Urban Bonfire cabinet is fully enclosed. Aesthetic back panels are only required when the back of the kitchen is visible. If the kitchen is to be placed against a wall or fence, or will be otherwise hidden from view, aesthetic back panels are unnecessary.

S-SIERRA36-BCKP	S-LAKESHORE36M-BCKP	S-BOREAL36-BCKP
S-SIERRA42-BCKP	S-LAKESHORE42-BCKP	S-BOREAL36M-BCKP
S-HORIZON36-BCKP	S-LAKESHORE42M-BCKP	S-BOREAL42-BCKP
S-HORIZON36M-BCKP	S-SPRING36-BCKP	S-BOREAL42M-BCKP
S-HORIZON42-BCKP	S-SPRING36M-BCKP	S-EQUINOX-BCKP
S-HORIZON42M-BCKP	S-SPRING42-BCKP	S-FIJI-BCKP
S-PRAIRIE36-BCKP	S-SPRING42M-BCKP	S-SKYE-BCKP
S-PRAIRIE36M-BCKP	S-CORAL36-BCKP	S-SOLSTICE-BCKP
S-PRAIRIE42-BCKP	S-CORAL36M-BCKP	S-VERMONT-BCKP
S-PRAIRIE42M-BCKP	S-CORAL42-BCKP	
S-LAKESHORE36-BCKP	S-CORAL42M-BCKP	

Only required when the back of the kitchen is visible.

Aesthetic back panel



**Step 5  
Powder Coating  
Color**

Our custom formulated NACRAE™ finish adds depth to the colors and resistance to fingerprints and stains.



Anthracite (-ANTH)



Clay (-CLAY)



Pewter (-PEWT)

**Included with  
Every Urban Bonfire® Classics Layout**

Each Urban Bonfire® Classics layout includes our premium outdoor grade 304 stainless steel handles and our matching powder coated stainless steel handles.

Stainless Steel Handle



Powder Coated Stainless Steel Handle



Anthracite



Clay



Pewter

**Step 6  
Shipping Details**

Dock to Dock Flat Rate Shipping  
(S-SHIPPING-USA-DOCK)

USD \$595

*Have something else  
in mind?*

Fill out your  
Request for Design Form  
for a custom experience with  
our in-house design team



## Request for Design

Dimensions \_\_\_\_\_  
\_\_\_\_\_

Lead Contact \_\_\_\_\_

Dealer/Company \_\_\_\_\_

Date \_\_\_\_\_

Client Name \_\_\_\_\_

Is the back of your kitchen exposed thus  
requiring aesthetic finishing back panels?

- Yes \_\_\_\_\_
- No \_\_\_\_\_
- Some \_\_\_\_\_

### Equipment Menu

- Gas Grill Brand \_\_\_\_\_ Size \_\_\_\_\_
- Side Burner Brand \_\_\_\_\_ Size \_\_\_\_\_
- Power Burner Brand \_\_\_\_\_ Size \_\_\_\_\_
- Refrigeration Brand \_\_\_\_\_ Size \_\_\_\_\_
- Kamado Brand \_\_\_\_\_ Size \_\_\_\_\_
- Sink Brand \_\_\_\_\_ Size \_\_\_\_\_
- Pizza Oven Brand \_\_\_\_\_ Size \_\_\_\_\_
- Other \_\_\_\_\_
- Other \_\_\_\_\_

### Fuel Type

- NG \_\_\_\_\_
- LP \_\_\_\_\_
- Bulk/Propane \_\_\_\_\_
- Electric \_\_\_\_\_
- Other \_\_\_\_\_

### Accessories to Include

- Garbage/Recycling \_\_\_\_\_
- Drawers \_\_\_\_\_
- Shelves \_\_\_\_\_
- Planters \_\_\_\_\_
- Slatwall Backsplash \_\_\_\_\_
- Kamado Rack \_\_\_\_\_

### Design Options

#### Powder Coat Color

- Artesan \_\_\_\_\_
- Anthracite \_\_\_\_\_
- Onyx \_\_\_\_\_
- Chantilly \_\_\_\_\_
- Clay \_\_\_\_\_
- Pewter \_\_\_\_\_

#### Handles

- Stainless Steel \_\_\_\_\_
- Powder Coated Stainless Steel \_\_\_\_\_
- Urban White Bronze Light Bronze Black Bronze
- Pull White Bronze Light Bronze Black Bronze
- Bauhaus White Bronze Light Bronze Black Bronze

### Countertop Thickness

- $\frac{3}{4}$ " \_\_\_\_\_
- 1  $\frac{1}{4}$ " \_\_\_\_\_
- Other, please specify \_\_\_\_\_

Extra Considerations? \_\_\_\_\_

Once complete please send request along  
with any additional design documents (plans,  
sketches) to [design@urbanbonfire.com](mailto:design@urbanbonfire.com)

Your account manager will confirm receipt.

Thank you.

FOR INTERNAL PURPOSES

Date Received \_\_\_\_\_

Account Manager \_\_\_\_\_

Grid area for drawing or notes.

## Urban Bonfire Custom Designs

Compatible with most major grill and outdoor appliance brands, including:



... and many more.

## Urban Bonfire Classics

Compatible with a curated selection of grill and outdoor appliance brands, including:

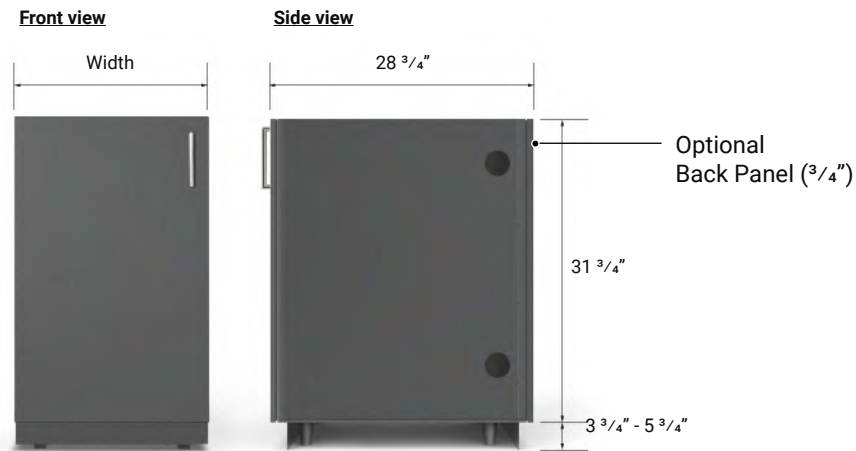




# Cabinet Specifications

## Dimensions

The following dimensions apply to all Urban Bonfire cabinets.  
Width varies with cabinet model.



## Model name

**A-XX00**  
Width (inches)  
Description



**Door Catch**  
Discrete, heavy duty magnetic catch system.

**Insulated Door**  
Dual panel doors with solid insulated core.

Full interior and exterior NACRAE™ anti-microbial finish.



**Conduits** designed to easily connect services (wire, pipes, etc.) between cabinets.

**Electrical and Plumbing: Removable Access Panels**  
Easily remove panel(s) to access outside services.

**Hardware**  
Outdoor grade 304 stainless steel  
- Commercial grade leveling legs  
- Pulls  
- Hinges  
- Slides  
- Handles

**Self-leveling Toe Kick**  
Adapts to slope and outdoor site conditions.  
Simple removal and replacement designed for easy cleaning or seasonal maintenance.

*Inspiring Designs*



## The ADAMO from our Custom Collection

Presented with Kalamazoo appliances, DEKTON® countertop in Vera, powder coating in Artesan and stainless steel handles. Starting at USD \$9,870.

Appliances and countertop are sold separately.



## The ALGARVE from our Custom Collection

Presented with Caliber appliances, DEKTON® countertop in Strato, powder coating in Onyx and bronze Pull handles in White Bronze finish. Starting at USD \$12,255.

Appliances and countertop are sold separately.



## The LAKESHORE 36 M from our Classics Collection

Presented with Blaze appliances, DEKTON® countertop in Portum, powder coating in Clay with matching powder coated stainless steel handles. Starting at USD \$11,095.

Appliances and countertop are sold separately.



## The MARBELLA from our Custom Collection

Presented with Hestan Outdoors appliances, DEKTON® countertop in Fossil, powder coating in Chantilly, stainless steel handles and our Cube Planter. Starting at USD \$12,650.

Appliances and countertop are sold separately.



## The MIRAMAR from our Custom Collection

Presented with True appliances, DEKTON® countertop in Nilium, powder coating in Artesan and Urban handles in Light Bronze finish. Starting at USD \$11,995.

Appliances and countertop are sold separately.



## The MIRALANI from our Custom Collection

Presented with Hestan Outdoors appliances, DEKTON® countertop in Opera, powder coating in Chantilly and powder coated stainless steel handles in Onyx. Starting at USD \$26,585.

Appliances and countertop are sold separately.



## The MESA from our Custom Collection

Presented with Wolf appliances, DEKTON® countertop in Opera, powder coating in Anthracite and bronze Bauhaus handles in White Bronze finish. Starting at USD \$12,925.

Appliances and countertop are sold separately.



## The PRAIRIE 42 M from our Classics Collection

Presented with DCS appliances, DEKTON® countertop in Fossil, powder coating in Pewter and stainless steel handles. Starting at USD \$9,055.

Appliances and countertop are sold separately.



## The REGATTA from our Custom Collection

Presented with Twin Eagles appliances, DEKTON® countertop in Lunar, powder coating in Onyx and Pull handles in Light Bronze finish. Starting at USD \$18,050.

Appliances and countertop are sold separately.



## The SANTA FE from our Custom Collection

Presented with Lynx appliances, DEKTON® countertop in Lunar, powder coating in Chantilly and stainless steel handles. Starting at USD \$16,560.

Appliances and countertop are sold separately.



## The SPRING 42 from our Classics Collection

Presented with Alfresco appliances, DEKTON® countertop in Nilium, powder coating in Clay with matching powder coated stainless steel handles. Starting at USD \$9,475.

Appliances and countertop are sold separately.



## The TUSCAN from our Custom Collection

Presented with Evo and Hestan beer dispenser, DEKTON® countertop in Opera, powder coating in Anthracite and bronze Pull handles in Black Bronze finish. Starting at USD \$13,395.

Appliances and countertop are sold separately.



## The VISTA from our Custom Collection

Presented with Coyote appliances, DEKTON® countertop in Lunar, powder coating in Artesan and bronze Bauhaus handles in White Bronze finish. Starting at USD \$15,465.

Appliances and countertop are sold separately.



3700 Saint-Patrick W. Suite 110  
Montreal, QC. H4E 1A2  
[urbanbonfire.com](http://urbanbonfire.com)